

ANUBIS

of Uta Gebert



*a poetic and humorous reflection
on mortality.*

ANUBIS

THE TEAM



Bildnachweis: © J.K.Kramer / NUMEN Company Nur für redaktionelle Veröff



DIRECTION : Uta Gebert

IDEA | STAGE DESIGN | PUPPETS: Uta Gebert

PERFORMANCE: Uta Gebert

MUSIC: Ulrich Kodjo Wendt, Mark Badur

COSTUMES: Sonia Albartus, Uta Gebert

ARTISTIC PARTICIPATION: Gabriel Hermand-Priquet,
Ilka Schönbein

PRODUCTION: Numen Company

COPRODUCTION: Schaubude Berlin

WITH THE SUPPORT OF: T-Werk Potsdam; Brotfabrik Berlin

DURATION: 30min

Anubis can be programmed together with *Limen* on the same stage with a 20 minutes pause between.

Show already hosted by : Internationales Figurentheater-festival - Erlangen - Germany | Semaines Internationales de la Marionnette - Neuchâtel- Switzerland | Out the Box - Cap Town - South Africa | FIDENA - Bochum - Germany | MiMa - Festival des arts de la Marionnette - Mirepoix - France | Imaginale - Stuttgart - Germany | Giboulées TJP - Strasbourg - France | Tipp Festival - Turku - Finland | Théâtre de la Vignette - Montpellier - France | Festival Rebellión de los muñecos - Chile ...

THE PROJECT

*"Cast this hereditary fear from thee!
I am no grewsome thing, no skeleton.
From Venus I'm descended, Dionysos' son,
The god of Souls before thee thou dost see.
When thou thru summer shadows going,
Hast seen a leaf borne thru the gilded air,
'Tis then my breath hath touched thee, thou unknowing,
That dreamlike doth all ripened things ensnare "*

- Hugo von Hofmannsthal

ANUBIS was the ancient Egyptian god who guided the spirits of the dead to the underworld where they would be judged. He was the guardian of the entrance to the underworld and the one weighing the hearts of the deceased on Maat's scale.

TRAVELLING on his boat between the world of the living and that of the dead, Anubis glides across the stage. His boat creaks when he casts off and crosses the river to fetch the souls of the dead he will be leading to the underworld. Cloaked in a cape and wearing a hood, he glances inquisitively at his surroundings.

He is a quiet and solitary god but when he breaks into a wild dance, he almost looks mischievous.

THE play *Anubis* invites us to a death ritual, in which Egyptian myths and the romantic poetry of Hugo von Hofmannsthal, the author of "Death and the Fool", seem naturally interwoven.



«There must be a magic trick...otherwise why do we feel so good after this play about death. Uta Gerbert, known for her talent for casting a new light on dark things, successfully manages this amazing feat in her play Anubis.»

Lucie Tirado, Neues Deutschland

«Berlin-based Uta Gerbert is a one-woman manipulation machine. I could hardly believe my eyes as she floated, almost imperceptible in a black outfit, behind one of the most visually arresting, evocative and complex puppets I've seen. I simply couldn't believe that one person was able to expressively operate a puppet with a nuance and delicacy unsurpassed in anything I have previously seen at the festival.

A reflection on mortality through the movements of a skeletal figure of Anubis, an Egyptian god and judge of the dead, the piece works at you slowly, pulling threads and themes with care until a final, exquisite moment of self-revelation and realisation between the manipulator and puppet brings us full circle between life and death, knowledge and naivety, being and been. Anubis was astounding. I feel privileged to have experienced it.»

Carla Lever, Cape Town Drama reviews South Africa

ABOUT

UTA GEBERT

CONCEPTION | DIRECTION | PUPPET | PERFORMANCE
| STAGE DESIGN

UTA Gebert has been working as an independent puppeteer since 1996. After graduating from the Academy of Dramatic Arts "Ernst Busch" in Berlin, department contemporary puppetry, in 1994, she studied for two years at the École Supérieure Nationale des Arts de la Marionnettes in Charleville-Mézières in France.

SHE became internationally known with her productions *Cocon*, *Anubis*, *Limen* and *Manto*. In 2013, she founded Numen Company whose latest production in 2018 is *Solace*, that was shown at numerous international festivals. Numen Company guested, among others, in Germany, France, Switzerland, Portugal, Czech Republic, Norway, Cape Verde, South Africa, Japan and Chile.

APART from her solo work, Uta Gebert cooperated with several international directors. From 2001 to 2007, she guested as a puppeteer in multiple productions of the American director, scenographer and puppeteer Roman Paska. Since 2015, she has an engagement as a puppeteer and actress in the production *The Ventriloquists Convention* by Gisèle Vienne.

IN 2015, Uta Gebert won an award from the Institut International de la Marionnette, Charleville-Mézières for "Création/Expérimentation". The prize is given to young artists or companies that renew the language, practice and aesthetics of puppetry.

Since 2000, Numen Company cooperates regularly with the SCHAUBUDE BERLIN and since 2013 with the TJP, Centre Dramatique National d'Alsace in Strasbourg.

UTA lives and works in Berlin.



COCON

Direction: Uta Gebert | Music: Morgan Dagueneat | Video: Silja Lex | Light: Paul Friedrich, Uta Gebert | (30min)

LIMEN

Direction: Uta Gebert | Artistic participation: Ursula Gebert, Gabriel Hermand-Priquet | Music: Ulrich Kodjo Wendt, Mark Badur | Light: Uta Gebert, Paul Friedrich | Costumes: Sonja Albartus, Uta Gebert | (20min)

MANTO

Direction: Uta Gebert | Singer: Harald Maiers | Artistic participation: Michel Cerda, Gabriel Hermand-Priquet, Inga Schmidt | Music: Mark Badur, Ulrich Kodjo Wendt | Light design: Fabien Bossard, Uta Gebert | Costumes: Sonja Albartus, Nicole Reinbold, Uta Gebert | (50min)

SOLACE

Dancer: Marine Chesnais or Laura Siegmund | Artistic participation: Gabriel Hermand-Priquet, Ursula Gebert | Music: Hahn Rowe | Light: Jérôme Houlès, Uta Gebert | Costumes: Sonja Albartus, Uta Gebert | (55 min)

TECHNICAL SHEET

ANUBIS of Numen Company

CREW TOUR

Uta Gebert – puppeteer

Paul Friedrich – technical director

TECHNICIAN

Paul Friedrich

+49 176 1034 9036

paul@friedrich-vt.de

GENERAL INFORMATION

Duration : 30 min

Capacity : 120 spectators

SCENIC SPACE AND TECHNICAL ROOM

• Frontal configuration, depending on the tier opening and depth, we may have to block some seats for bad visibility reasons.

• **The show requires a total darkness**

• Stage dimensions (minimum):

Opening : 6 metres minimum

Depth : 6 metres minimum

Height : 3,50 metres minimum

• The technic room must permit a total vision and listening of the stage. If not, we must put our technic controllers at the top of the tier.

STAGE

- Floor: Mali / Dance Floor (Smooth, Black)
- Black covered sidewalls
- Backdrop: Molton or Velvet, Black
- Skirting for the front border of the stage
- 3 Legs: Molton or Velvet, Black
- 3 stage weights ca. 12kg each
- 40,0 l flower soil

SOUND

- PA system FOH
- 1 – 2 x Wedges or sidefills for Monitoring on stage
- 2 x CD Player (same brand) with auto pause, autocue and singleplay
- 1 x Mixingdesk providing monitor routing and at least 8 input channels
- 1 x Main Equalizer (Triband or similar)

LIGHT

- 24 Dimmer Channels 2kw
- 3 découpes 28°/40° 650 W
- 15 PC 1kw with Barndors (can be Fresnel as well)
- Coulor Gels: 14 x LEE 201, 2 x LEE 152, 2 x LEE 711, Black Wrap, AluTape
- 5 Zoom Profiles, 25-50° on stands (height 2,00m)
- Lightboard with splitting fade times, submasters

MISCELLANEOUS

Light and sound has to be operated by one person on time. FOH has to be in the audience.

Cleaning stuff: Broom, Mop, dustpan and Bruch, bucket

NB: we may ask for many dimmer lines on the floor.

We also need a scaled plot (top view and side view) to adapt the scenography and light positions before coming (.pdf and .dwg format).

We need to have a DMX input on stage for the focus and in the tribune during the afternoon before the show.

TECHNICAL PLANNING AND TOUR REQUIREMENT

ANUBIS of the Numen Company

THE DAY BEFORE		
9h / 13h	14h / 18h	19h / 23h
		Light set up Stage set up Sound set up
		1 light manager 1 stage manager 1 sound manager

THE DAY OF THE SHOW		
9h / 13h	14h / 18h	19h / 23h
Light focus Sound focus	Light and sound corrections Warm up / Rehearsal	Show and strike
1 light manager 1 stage manager 1 sound manager		1 light manager 1 stage manager 1 sound manager

TRANSPORT

- The scenography and technical material of the company can travel by car or by airplane with one box. We can bring them within the excess baggage by plane (1 metal box of about 30kg).
- The box have to be stock in the theater at our arrival.
- In case of Uta's arrival with the plane someone have to pick her up with the box at the airport.

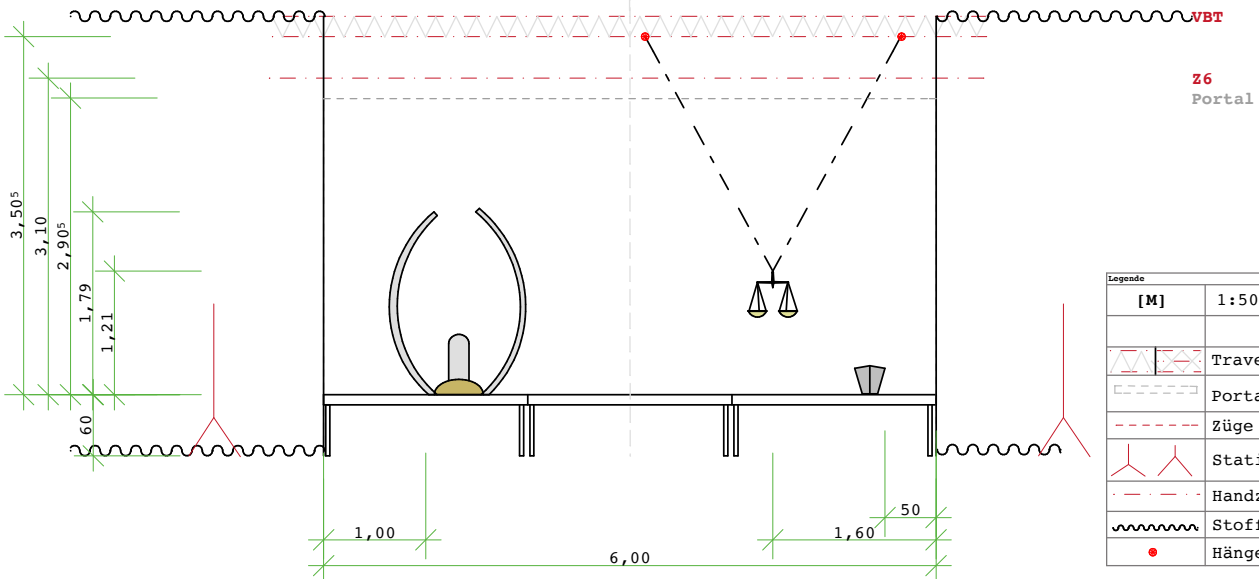
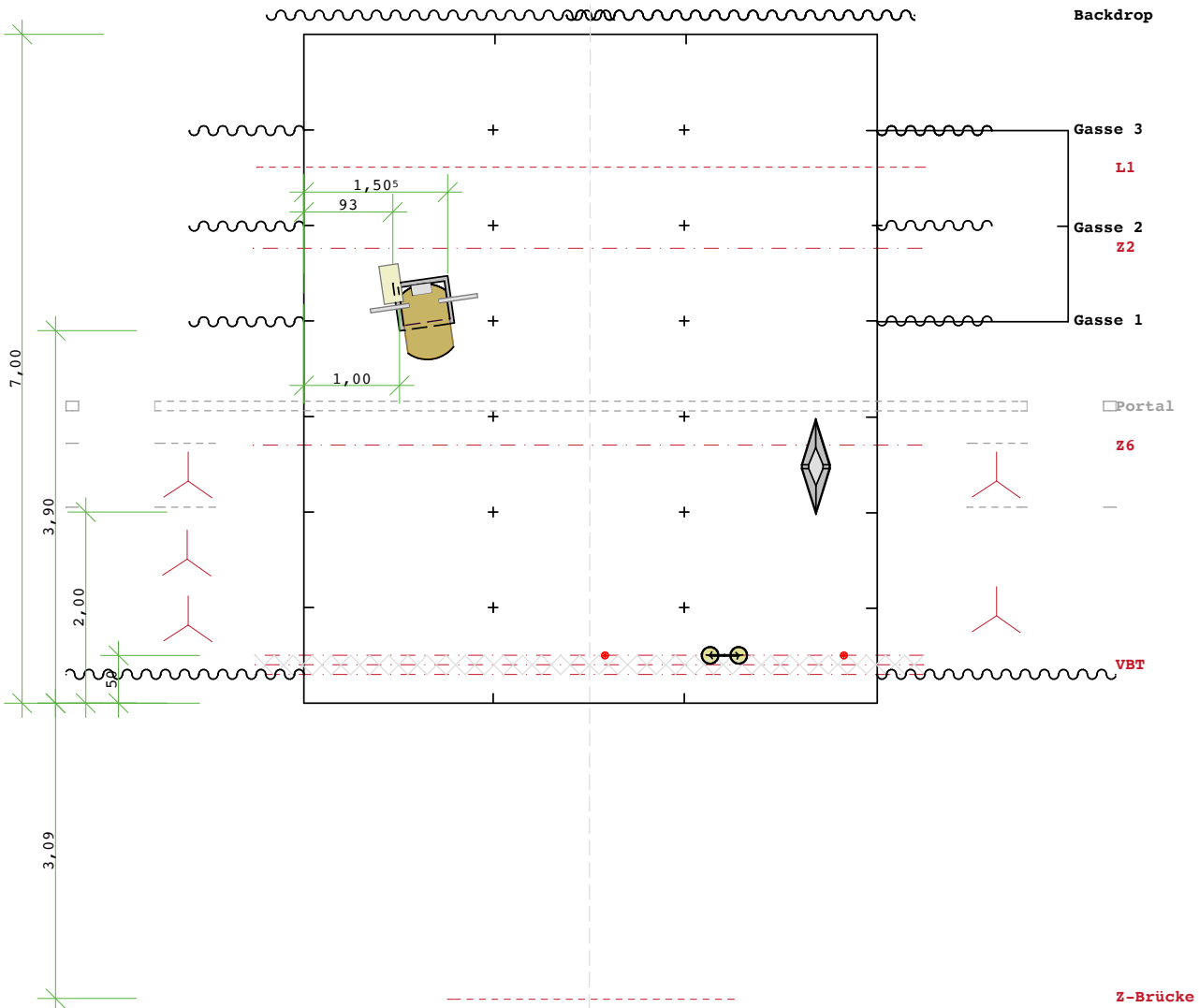
FRAIS DE DÉPLACEMENT







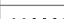
Uta and Paul are coming from Berlin by car (with all scenography and the puppet) or by plane with one metal box and the puppet.

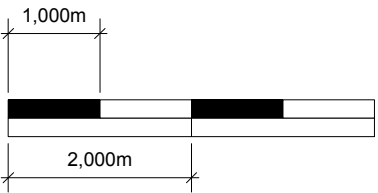
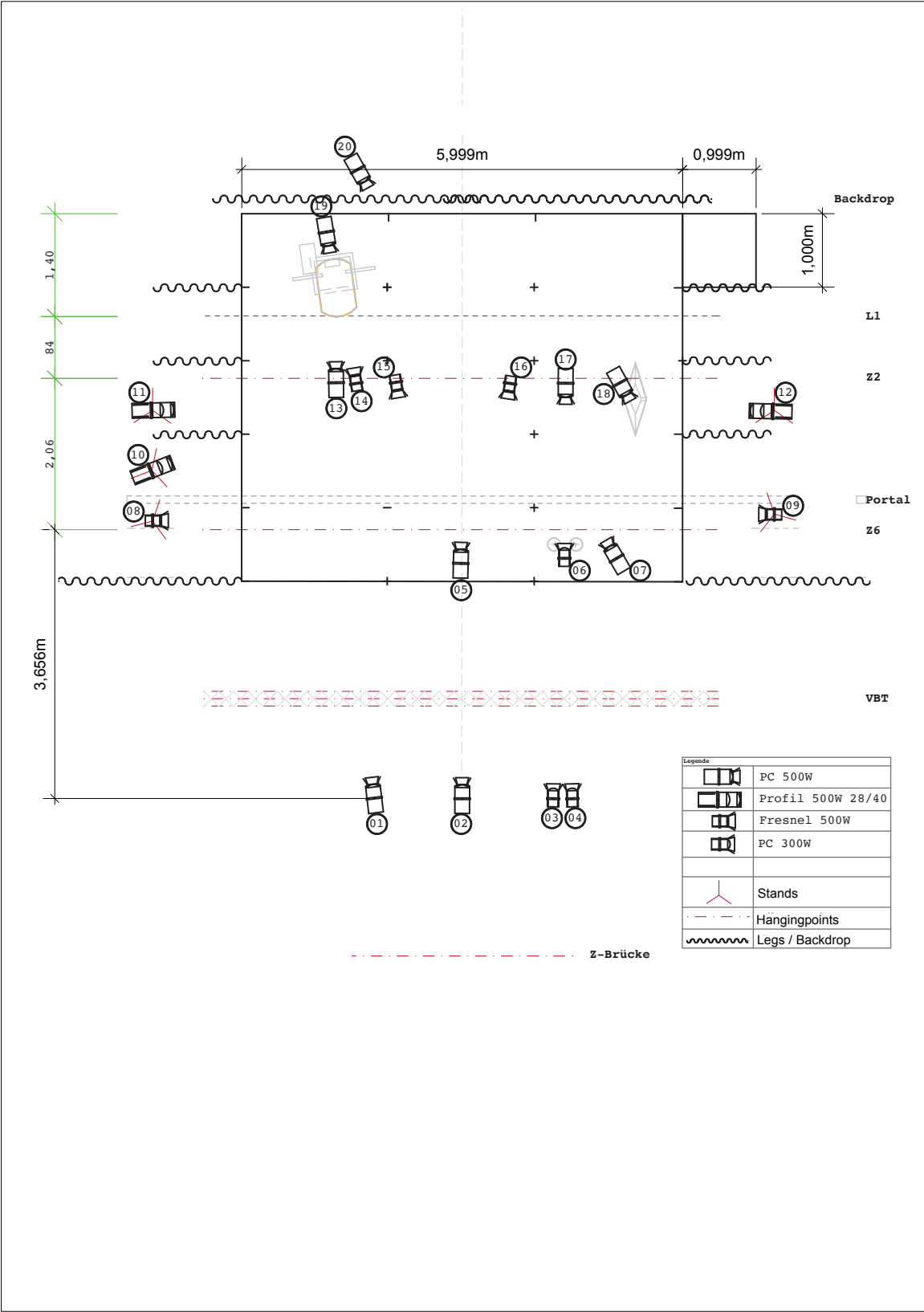
ACCOMODATIONS

Free board and lodging (2 single rooms).

Anubis - Bühnenplan



Legende	
[M]	1:50
	Traverse 3Punkt
	Portal
	Züge Fest
	Stativ
	Handzüge
	Stoffe
	Hängepunkte



Projekt	Projektnummer
Anubis	Plannummer
Anubis Lightplot	100
Auftraggeber	Gez.
	Datum gez.
	Datum gepr.
Planverfasser	Maßstab
	1:50
	Dateiname
	Ohne Titel

CONTACT

UTA GEBERT

| Artistic direction of Numen Company

Dunckerstrasse 78

10437 Berlin

+49 177 728 728 2

info@numen-company.com

www.numen-company.com